

# from Oxbows to

Newsletter of the Pee Dee Land Trust

Chesterfield • Darlington • Dillon • Florence • Georgetown  
Horry • Marion • Marlboro • Williamsburg



Pee Dee  
Land Trust

Volume 11 • Issue 2  
Fall 2015

# Tidal Flows

P.O. Box 2134 • Florence, SC 29503 • 843.667.3229  
PeeDeeLandTrust.org • info@PeeDeeLandTrust.org

## Growing Our Conservation Community

Thanks to the support of the Pee Dee Land Trust conservation community, we have now surpassed the 22,000 acre mark in protected lands as of November! We worked with landowners to complete three new easement projects in 2015 totaling 990 new acres protected. These include several exciting milestones. The Back Swamp Woods is the first project in Florence County to be funded with a grant from the South Carolina Conservation

Bank – the primary source of state funding for land conservation. The Johnson Experimental Forest is our first ever conservation easement in Chesterfield County! The Tilghman Tract protects over a mile of frontage on the Great Pee Dee River, and is one of five conservation easements PDLT has completed along its namesake river. Each year we strive to reach new milestones for protecting the places we love that make the Pee Dee unique.

### Tilghman Tract – 670 acres, Marlboro County

On October 21st, PDLT finalized its partnership with Cattails Tree Farm, LLC to permanently protect 670 acres along the Great Pee Dee River in Marlboro County. The Tilghman tract, as the property is known, is PDLT's fifth conservation agreement along the region's major river. With over a mile of river frontage, significant frontage on a black water creek, an oxbow lake, and extensive bottomland hardwood and cypress-tupelo forests, the Tilghman Tract boasts significant wildlife habitat and water resources that are now protected through enhanced forested buffers. In addition, Henegan Lake is one of the first oxbow lakes on the upper Pee Dee. Such lakes are unique and have been carved off of the main river channel over time. The agreement will keep the property from being fragmented, helping

to ensure that it will remain intact and in forestry and recreational uses such as hunting and fishing.



*Eddie Drayton, owner of Cattails Tree Farm, standing next to a cherrybark oak named 'Mr. Big' that is part of a permanent growth plot where he measures old growth timber rates.*



*View of Pee Dee River from the Tilghman Tract.*

### Johnson Experimental Forest 227 acres, Chesterfield County

After 15 years PDLT reached a milestone of completing its first conservation project in Chesterfield County by partnering with Knowlton (K.W.) Johnson to establish a conservation easement on the Johnson Experimental Forest (JEF). Dr. Johnson (Ph.D.) grew up on the property and has strong ties to it. He took the initiative to consolidate the land under his ownership by acquiring his sibling's interest. JEF is a unique property that is being managed as a

*see "Johnson" page 10*

### Back Swamp Woods 93 acres, Florence County

PDLT recently completed one of its more complex conservation transactions to date. It began in July of 2013 when PDLT submitted an application to the South Carolina Conservation Bank for funds to purchase 93 acres of land surrounding the Back Swamp School House, a historic school house (circa 1921) in Florence County. The objective was to secure title to the property, protect it in perpetuity with a conservation easement, and transfer the property to the Back Swamp School Trust

*see "Back Swamp" page 10*

## BOARD OF DIRECTORS

(PDLT is governed by a board with representatives from each county)

### CHESTERFIELD

Andrew McLeod

### DARLINGTON

Gordon McBride  
Keith Williamson

### DILLON

Douglas Lynn, Secretary/Treasurer  
Dickie Sherman

### FLORENCE

Diddy Anderson  
Buddy Brand, Chairman

### GEORGETOWN

Steve Jones  
Johnny Weaver

### HORRY

Brice Harry  
Ruell Hicks

### MARION

Charles Bethea  
Susan Riales

### MARLBORO

Billy Hinson  
Catherine Rogers

### WILLIAMSBURG

Louise Easterling  
Bill McCullough  
John Snow

### AT-LARGE

Tim Dargan, Vice-Chairman

## STAFF

### EXECUTIVE DIRECTOR

David Harper

### DIRECTOR OF

### EDUCATION/OUTREACH

Lyles Cooper Lyles

### DIRECTOR OF

### LAND CONSERVATION

Seth Cook

### FINANCE & ADMINISTRATION COORDINATOR

Ashley Scott

## OFFICE CONTACT

PDLT is located in historic downtown  
Florence at 154 W. Evans Street,  
2nd Floor

Phone: 843-667-3229

Fax: 843-667-6818

info@peedeelandtrust.org

Our mailing address is:

**P.O. Box 2134**

**Florence, SC 29503**

# Board and Staff News

## Farewell to Departing Board Members:

*At year end, PDLT will bid farewell to the following board members:*

### Gordon McBride, Darlington County

As Chair of the PDLT board in 2012 and 2013, Gordon's steady guidance was crucial during an important time of transition for PDLT as first Executive Director Jennie Williamson Pezé stepped down and David Harper was hired. Gordon served two 4-year terms on the board. We are grateful for his service and wish him well.



Gordon McBride

### Charlie Bethea, Marion County

Charlie served two 4-year terms on the PDLT board, and as Chair of PDLT's Governance Committee. He was instrumental in sharing his expertise during the development of PDLT's five-year Strategic Plan and guided the process for LTA Accreditation. Charlie was always willing to meet a challenge and step-up to get hands on with projects. His sage advice on board and organizational management will be missed.



Charlie Bethea

### John Snow, Williamsburg County

John served two 4-year terms on the PDLT board and was a strong voice for conservation in his native Williamsburg County. John was always willing to assist PDLT staff with events, including serving as our official parking coordinator. John's enthusiasm will be missed and we wish him well.



John Snow

## In Memoriam – Edward Kent “Kenny” Segars

The Pee Dee and South Carolina lost one of our greatest conservation leaders in August with the passing of Kenny Segars. Kenny was a lifelong Hartsville resident and graduated Clemson with a degree in Resource Management. He was instrumental in creating the 796-acre Segars-McKinnon Heritage Preserve adjacent to Kalmia Gardens in Hartsville. Kenny served on the Darlington County Soil and Water Conservation Commission for many years and was a strong supporter of land conservation. He was a founding board member of Pee Dee Land Trust.

In 2007, Kenny and his siblings Al and Mary Segars granted a conservation easement to the Black Creek Land Trust (BCLT) protecting the historic 533-acre Segars Mill Pond. Segars Mill was constructed as a gristmill in the early 1800's, and by the early 1900's the mill pond became a well-known swimming area and dance hall for the Hartsville community. Funded in part by a grant from the South Carolina Conservation Bank, the transaction permanently protected a gateway property to Hartsville with extensive frontage on both sides of Highway 151. The conservation easement is now held by PDLT, following our consolidation with BCLT.



Kenny Segars

The last project Kenny was working on is nearing completion. It is lovingly called “Club Mud”, situated on 387 acres outside of Cheraw on the Pee Dee River. As young boys, Kenny and Al spent great times on this property hunting. Kenny was working with the USDA Wetland Reserve Program to restore this area to its native condition.

The staff and board of Pee Dee Land Trust will remember Kenny for his stewardship ethic, and will ensure that it lives on through our work.



# "Our Places" - Endowment for the Pee Dee Land Trust

PDLT is making great progress with "Our Places", the second phase of our Operating Endowment campaign to support our mission and uphold our conservation agreements in perpetuity. The PDLT Endowment now stands at more than \$600,000, or 60% of our goal to reach \$1 million prior to the end of 2017. More than \$200,000 has been raised from conservation-minded donors in just the first 10 months of this year! This is in addition to the \$400,000 contributed by 31 "Stewards of the Pee Dee" who each donated \$10,000 or more during the first

**The roots of Pee Dee Land Trust's Our Places endowment campaign can be found in the generous contributions of the Stewards of the Pee Dee. A Steward donated \$10,000 to the operations endowment between 2008 – 2014 during the first phase of the campaign. The following 31 individuals, families, foundations, and corporations each expressed their commitment to PDLT:**

Diddy and Jim Anderson  
Anonymous  
Daphne and Dave Aycock  
BC Moore Foundation  
Blackwater LLC  
Janet and Buddy Brand  
Mary Alice Ingram Busch  
Rhetta and Buddy Calhoun  
Marianne and Jim Crawford  
Charles W. and Elizabeth H. Coker Foundation  
DSM  
Kirk Dunlap  
Anne and Dan Ervin  
First Bank  
Deborah and Ruell Hicks  
Billie and Alan Houghton  
Snoots and Richard Howard  
Mary Coker Joslin  
Diane and Sumter Langston  
Flo, Don and Carol Mabe  
McCall Farms  
McTeer Real Estate  
Charles and Tommy O'Neal  
Pearce Land Company  
Jennie Williamson Pezé  
Marie and Tony Shank  
Janet and Dickie Sherman  
Turner Padget Graham and Laney, PA  
Charlotte and David Van Hoose  
Webster Rogers, LLP  
Sara Williamson

phase (2008 - 2014). The staff and board of the Pee Dee Land Trust wish to express our sincere gratitude for those who have given so generously as Sustaining Stewards (multiple gifts of \$10,000), Stewards (\$10,000), and at every level. Contributions can be made in gifts of cash, appreciated stock, and even real estate. For more information, contact Lyles Cooper Lyles, Director of Education and Outreach at [lclyles@peedeelandtrust.org](mailto:lclyles@peedeelandtrust.org) or 843-250-8175. Please consider your role in this important campaign for the future of Pee Dee Land Trust as a voice for the land -- Long Live the Pee Dee!

**The following Steward level donors have made lead gifts in support of the second phase of the Our Places endowment campaign which we launched in 2015:**

Diddy and Jim Anderson \*  
Frances and Charlie Bethea  
Janet and Buddy Brand \*\*\*  
Mary Alice Ingram Busch \*  
James C. Crawford III Charitable Fund  
Caroline and Tim Dargan  
Linda and Eddie Drayton  
Deborah and Ruell Hicks \*\*  
Bee and Steve Jones  
Catherine Rogers \*\*\*  
Mary Caroline and Wallace Vaught  
Ida and Alva Whitehead  
Caroline and Keith Williamson  
Kathe and Edwin Williamson

*\*Sustaining Stewards are donors giving at the \$10,000 Steward level for multiple years.*

**Our Places Endowment Campaign Goal is to raise \$1,000,000 by the end of 2017 to help ensure PDLT will be able to meet our mission in perpetuity.**

\$1,000,000

\$900,000

\$800,000

\$700,000

\$600,000

\$500,000

\$400,000

\$300,000

\$200,000

\$100,000

# Summer/Fall Events Recap

## Paddle Trip on the Lower Lynches River

PDLT members enjoyed a glorious spring paddle down the Lower Lynches River on Saturday, May 2nd! PDLT was happy to coordinate the trip as part of the Revolutionary Rivers Paddle Series, Part 2: The Lower Lynches River. Paddlers put in at Venters Landing and took out at Snows Lake. A special thanks to Bob Barrett for sharing his knowledge of Francis Marion's activities in these very swamps over two hundred years ago. Thanks to Terry Cook with Swamp Fox Canoe Rental for guiding a successful trip through the gorgeous waterways of the Pee Dee. PDLT is proud to promote the Florence Convention and Visitors Bureau's Revolutionary Rivers trail for all to enjoy!

## Annual Picnic

PDLT members and guests gathered for a fun family afternoon at the 2015 Annual Picnic on Sunday, May 31st, at Blackwater Farms in Florence County. Everyone enjoyed a beautiful day of great food, live music, outdoor activities, crafts and socializing with new and old friends! PDLT was proud to present bird boxes to some of our recent Easement Donors. Dr. Jeff Steinmetz, professor of biology at Francis Marion University, led guests of all ages on an exploration of the natural diversity of the lake. A very special thank you to all of our sponsors:



**FIRST BANK**



**Anderson Brothers Bank**  
**Crown Beverages**  
**Naturally Outdoors**  
**Jeff Steinmetz**

**Carolyn & Rocky Pearce**  
**Dedicated Community Bank**  
**Jay James**

## A Taste of Revolution

PDLT partnered with the Florence County Historical Society and the City of Johnsonville to deliver a fun afternoon on the banks of the Lynches River in Johnsonville on Saturday, August 15th, for A Taste of Revolution: A Celebration of Florence County Heritage Day. Attendees celebrated Revolutionary War-era foods and commemorated the date when General Francis Marion took command of local militia at Venter's Landing on August 17, 1780 and embarked on his campaign to confound British troops and give us the America we now know as free from Britain's rule. Dr. David Shields, McClintock Professor of Southern Letters at USC and author of Southern Provisions, spoke about two Early American dishes that guests tasted -- both indigenous to the Pee Dee: Pine Bark Fish Stew and Purlieu. Activities at Venters Landing, formerly Witherspoon's Ferry, transported attendees back to the late 1700s as they petted Marsh Tacky horses, smelled the cannon powder and fire smoke of Revolutionary War re-enactor camps, and tasted the foods from that time made with local ingredients.

## Wooden Boat Show

Our own board member Johnny Weaver served as Dock Master overseeing the 26th annual Georgetown Wooden Boat Show on Saturday, October 17th in Georgetown. This is one of the top shows in the country for lovers of wooden water craft. Pee Dee Land Trust was present with our booth, and Executive Director David Harper greeted hundreds of attendees to let them know of the good work PDLT is doing to preserve the natural beauty of the waterways enjoyed by boaters in the Winyah Bay area.





## Taste of Scottish History in the Pee Dee

Over 60 guests joined us Sunday, October 18th on a beautiful fall afternoon as we learned about the Scottish heritage of some of our earliest settlers in Marlboro County. Catherine Gambrell Rogers most generously opened up her newly restored family homestead, Argyll at McCall's Mill Pond circa 1810, to share her family's history. We learned from David Hoffman about the Scottish architectural significance of the home and other structures on the property. David and Catherine gave the guests tours of the authentically restored structures. Stories that have been passed down from generation to

generation were shared by family members while we enjoyed hors d'oeuvres, libations and great company. James 'Jim' Harris, co-author of Single-Malt Whiskies of Scotland, guided us through a tasting of four single malt Scottish Whiskies and hors d'oeuvres pairings.

**Presenting Sponsor:**



Marlboro Electric Cooperative

## Bountiful Brunch Benefit

The rain did not dampen our spirits as 230 guests enjoyed Pee Dee Land Trust's 5th Annual Bountiful Brunch Benefit on Sunday, November 1st at the Melea Manning House on Lowther's Lake, Darlington County, SC. Guests gathered on the lawn and many took the opportunity to tour the newly restored historical home and the gorgeous trail to the bluffs, owned by our host Dr. Chip Helms. Those in attendance were treated to the region's premier farm-to-table experience that included a five-course gourmet meal prepared with local ingredients and paired with fine wines donated by Micky Finn's and selected by wine expert Dennis Fraley. A mix of locally crafted items and unique wares in the silent auction were proven popular by bidders and helped raise over \$9,000. It was fun to see those folks that have attended all five years of this benefit and exciting to see lots of new faces joining our conservation community.

**Presenting Sponsors**

**Melea Sponsor**



**Manning Sponsors:** Janet & Buddy Brand, Haynsworth Sinkler Boyd, P.A., McLeod Health, Sonoco

**Host Committee Sponsors:** Diddy & Jim Anderson, Cindy & Eric Belk, Frances & Charlie Bethea, Ann Rodgers Chandler, Chase Oil Company, Inc., Marion & Ricky Coxe, Tim Cunningham, Anne & Dan Ervin, Donna Goodman & Dewey Ervin, Kathi & Marshall Flowers, Lane & Al Gilpin, Jana & Christopher Goss, Edwin Haenni, Anne & Mark Hanna, Jane & Rex Huggins, Jill & Joe Lewis, Bernice & Gordon McBride, Anne & Tim Norwood, Joan & Michael Pavy, Karen & Thomas Phillips, Laura & Tommy Phillips, Brian Sang, Patricia Martin & Brad Turley, Mary Caroline & Wallace Vaught, Webster Rogers, Ida & Alva Whitehead, Emily & Weave Whitehead, Marguerite & Frank Willis

**Host Volunteers:** Dr. Ernest 'Chip' Helms, Jeff Murrie, Dennis Fraley, Caroline Dargan, Finley James & Deetz Mullins

Please visit our website and Facebook page to see all the photos from these experiences and links to our sponsors and in-kind donors.







## Upcoming Events

### Annual Oyster Roast Hobcaw Barony, Georgetown County

Saturday, February 20, 2016

Oyster Roast guests will also have the opportunity to sign up for tours of Bellefield Plantation and Friendfield Village from 9:30am-12:30pm.

Presenting Sponsor:

**Edward Jones**  
MAKING SENSE OF INVESTING  
Wendell Jones



Invitations to be mailed to all current PDLT Members mid-January

### Annual Picnic

Date and Place TBD

Presenting Sponsor:



*Keep an eye out for the Winter/Spring 2016 Events Calendar, which will be mailed out in early February. Throughout 2016, we will continue to hold special events to mark our next phase of growth as a community-based organization. Moreover, we will continue to work to protect the places you love around the Pee Dee-- places where you hunt, fish, hike, bike, and otherwise enjoy this special region.*



## Honoraria

**Diddy and Jim Anderson**  
by Susan and John Bankson

**J. Michael Baxley**  
by Merle Baxley

**Toby Bethea**  
by Laura Bethea

**Received between  
April 16- November 15, 2015**

**George, Ben, Clement and Scott Wilds**  
by Sara K. Wilds

**Belle and Ben Zeigler**  
by Kaki and Belton Zeigler

## Memorials

**Jean Fort**  
by Deborah and Kirk Dunlap

**Pet Larimore**  
by Florence M. Ervin

**Ed Lee**  
by Genie Lee

**Isabel Lewis Scott**  
by Martha and David Gruning

**Received between  
April 16- November 15, 2015**

**Trey Stokes**  
by Dr. Hunter R. Stokes, Sr.

**Kenny Segars**  
by Deborah and Kirk Dunlap,  
by Bernice and Gordon McBride,  
by Alton McCullough

# Grant Updates

Each year, PDLT staff applies for grant funding to cover a portion of its operating expenses, and to take on exciting new projects that help us further our mission. These grants are primarily provided by foundations, with a small portion from government agencies. In 2015/2016 PDLT is working with the following grants:

**Francis P. Bunnelle Foundation** -- \$18,000 to support our land conservation and education work in Georgetown County.

Bunnelle Foundation Visit to Graceland:

Friends with the Bunnelle Foundation joined us for a rainy, but exciting site visit to Graceland. Steve Jones, current PDLT Board Member and 2007 Easement Donor, led us on a tour of his family's property located along a 3-mile stretch of the Black River in Georgetown County. Graceland was left to Steve and his siblings upon his father's passing. Steve and his siblings partnered with PDLT in order to permanently protect their property and to create a management plan.

Captain Johnny Weaver, current PDLT Board Member, met us at the landing down from Graceland and we all boarded his pontoon boat for a WET scenic river tour. Although the rain was literally pouring, all were in good spirits and enjoyed the gorgeous natural features this part of the river has to offer.

PDLT has been the fortunate recipient of a 'Grant for the Common Good' from the Bunnelle Foundation in recent years. The Frances P. Bunnelle Foundation is dedicated to strengthening and supporting charitable causes serving Georgetown County, South Carolina. Founded by its namesake prior to her passing in 2000, the Foundation embodies her vision of a community with abundant opportunity for healthy, safe, and sustainable living.



## **Gaylord and Dorothy Donnelley Foundation**

\$30,000 per year over 2 years to support our land conservation and education work in the coastal counties of Horry and Georgetown.



GAYLORD & DOROTHY  
DONNELLEY FOUNDATION



## **Duke Energy**

\$25,000 for the Black Creek BioBlitz Program, Phase II (see article on pg 15) and \$2,000 to update and print PDLT's Landowner Guide.



## **Norcross Wildlife Foundation**

\$1,500 for tools to manage PDLT's nature preserves

## **USDA Rural Business Development Grant**

\$98,500 to support an Assessment of High Quality Timber Marketing Options for landowners in the Pee Dee who are growing larger trees producing dense wood.



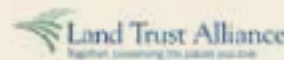
## **Food Lion**

\$3,000 for our Farms to Food Bank project, purchasing fresh produce from limited resource farmers for distribution to the Lowcountry Food Bank to meet the needs of those facing hunger and malnutrition in Williamsburg, Georgetown, and Horry Counties.



## **Land Trust Alliance**

\$2,000 to hire an environmental education consultant and \$10,000 toward an assessment of land gift opportunities.



## **New Belgium Brewing**

\$2,500 in support of the Farms to Food Bank project in partnership with Harvest Hope Food Bank facility in Florence serving the Pee Dee.



## **Wells Fargo Environmental Solutions for Communities/National Fish and Wildlife Foundation**

\$25,000 for the Black Creek BioBlitz Program, Phase I (see article on page 15)





# Special thanks to those individuals and org Pee Dee Land Trust Membership Fund betw

We make every effort to include all donors' names. However, if we have inadvertently

## **Watershed: \$5000 +**

Anonymous  
Daphne and H.D. Aycock  
Duke Energy Foundation  
Anne and Dan Ervin  
Frances P. Bunnelle Foundation  
Gaylord and Dorothy  
Donnelley Foundation  
International Paper Foundation  
Land Trust Alliance  
Bruce Richbourg

## **River: \$1000-4999**

Diddy and Jim Anderson  
Marianne and Jim Crawford  
Duke Energy Carolinas  
Rosalie Steele and  
Robert McKenna  
Christie and Andrew McLeod  
McLeod Health  
The Malloy Foundation  
Sara K. Wilds  
Eldred and Sarah  
Wooten Prince Foundation

## **Creek: \$500-999**

Susan and John D. Bankson  
Pat and Paul Bonham  
Janet and Buddy Brand  
Peggy and Frank Brown  
Marsha and Richard Bryant  
Judy and Winston Charles  
Rhonda and R. Howard Coker  
Betsy and Charles Commander  
Caroline and Timothy Dargan  
Dillon Tractor &  
Implement Co., Inc.  
Grantham Properties &  
Development, Inc.  
Alex Hinson  
Ella Reese and Billy Hinson  
Snoots and Richard G. Howard  
The Humanities Council of SC  
Julia Krebs and Roger Hux  
Tina and Kevin Mahoney  
Olan Mills Inc.  
Karen and Avie Rainwater  
Linda Russell  
SC Conservation Exchange  
Bob Schofield  
Janet and Richard Sherman  
Emily and Weave Whitehead  
Carrington and Barry Wingard

## **Stream: \$250-499**

ArborOne Financial  
Lyne and Greg Askins  
Elin Berg  
Frances and Charlie Bethea  
Jane and John Chapman  
Comfort Keepers  
Victoria and  
Charles Commander  
Commander Health  
Care Facilities Inc.  
Lynda T. Courtney  
Marion and Richard B. Cox  
Julie and Grady Culbertson  
Edwin Dargan, Jr.  
Paul T. Davis, DMD  
Debra M. and John Dickinson  
John Draughn  
Linda and Eddie Drayton  
Lou and Barney Easterling  
Elliott Realty  
George Geer  
Gilbert Construction  
Stanley H. Hackett  
Edwin Haenni  
Caroline and David Harper  
Emily and Ryan Hicks  
Rebecca and Edwin Hinds  
Helen and Evans Holland  
Susie and Weston Houck  
Jennifer and William Howard  
Howle Law Firm  
Huntley Enterprises-Fast  
Track Convenience Stores  
Sallie and Marc Johnson  
Bee and Steve Jones  
Margaret and Wendell Jones  
Judith and Kenneth Kammer  
Diane and Sumter Langston  
Ione and John Lee  
Linda and Hugh Lupold  
Marlboro Electric  
Cooperative, Inc.  
Match Factors, Inc.  
McLean Marechal Insurance  
Ellen and Jay Pearson  
Jennie and Vincent Pezé  
Nancy and Carroll Player  
Maribeth and Michael Rose  
Christy and Heath Ruffner  
Santee Electric Co-op  
SC Conservation Exchange, LLC  
Scarborough Farms  
Marie and Tony Shank  
Betty and Louis Snyder  
Frances and Marion Swink

Anne and Jody Tamsberg  
Mary Caroline and  
Wallace Vaught  
Janette and Johnny Weaver  
Elisabeth and Benton  
D. Williamson  
Kaki and Belton Zeigler

## **Tributary: \$100-249**

Jan and John Alford  
John E. Allison  
Fielding and Stuart Ames  
Sandy and David Andrews  
Ronna Askins  
Crystal and Stephen Askins  
Michal and Dick Baird  
Leslie and Dale Barth  
Catherine and Jim Battle  
Bennett Baxley  
Cindy and Eric Belk  
Betty and Glenn Bell  
Toby Bethea  
Laura Bethea  
Mary Kendall and John Bittle  
Lana Blackmon  
Nancy Blair Parr and David Boyd  
Rosanne Brasington  
Angelyn and Saunders Bridges  
Jeannie and Furman Brodie  
Walt Brown  
Jack Bryan  
Jon Edward Buchan, Jr.  
Mary Alice Ingram Busch  
Myla and Eugene Butler  
Calhoun Farms  
Clare and Bradley Callicott  
Patricia and Jerry Carnell  
Anna and J.W. Nelson Chandler  
Elizabeth and Jay Chandler  
Elting Chapman  
Chase Oil Company, Inc.  
Melissa and George Chastain  
Mary and Ray M. Clanton  
Laura and Finley Clarke  
Berry Coggeshall III  
Dyan and Alexander Cohen  
Peggy and Andy Cohen  
William Coleman  
Conner Law Firm  
Betty and Robert Corning  
Meredith and Campbell Cox  
Anne and Lane Craven  
Kitty and Gene Cutler  
Ida and William C. Dailey  
Lucy and Sam Dargan  
Rose and John Davis  
Robert and Janet DeFee  
Christy and David Douglas  
Bill and Sarah DuBose  
Jeff Dudley  
Dunes Realty  
Francie and Joe Dunlap  
Deborah and Kirk Dunlap  
Zilphy and John DuRant  
Lola and Charles Early  
Philip L. Edwards  
Frances Elmore  
Florence M. Ervin  
Jennifer and Francis Ervin  
S. F. Ervin, Jr.  
Elizabeth and W.C. Ervin  
Carol and Bob Fabrey  
JoAnn and Raymond Fisher  
Forget Me Not Garden Club  
Edward Fort  
Barbara and Ronald Fowler  
Joyce Franklin  
Kris and Gregory L. Frost  
Juana and Richard Gamble  
Virginia and Larry Gantt  
Karen and John Gentry  
Jana and Christopher Goss  
William A. and Robbie Gray  
Martha and David Gruning  
Jane and Ken Gunter  
Sue and Hans Habermeier  
Brenda and Tim Hagen  
Hamer Door and Partitions, Inc.  
Betty and W.D. Hardaway  
Mary and Charles Hardin  
Bess and Brice Harry  
Hartsville Woodworkers  
Greta and Marion Hawkins  
Ernest L. Helms III  
John Herbert  
Beverly and Laddie Hiller  
C. Melinda Fuller and  
Marty Honney  
Elizabeth and Alan Hubbard  
Beth and Reginald Hubbard  
Frances and Charles Hupfer  
Patricia and Tres Hyman  
Vera Hyman  
Christine and Stephen Intemann  
Debbie and Ken Jackson  
John Jay James II  
Albert L. James, Jr.  
Salley and Billy Jenkinson  
Carolyn and Gregg Jones  
Ginger and David Jordan  
Marty and René Josey  
David S. Kelley, CPA  
Kari and Ben King

Mary and Fred Krainin  
Nancy and John T. Langston  
Tru and Ed Lawton  
Jamie Lee  
Margaret Lee  
Amey Parsons and Tony Lewis  
Jill and Joseph Lewis  
Eleanor and John Lock  
Meta and John Loftin  
Carol Mabe  
Susan and Bill Malloy  
Bernice and Gordon McBride  
P. L. McCall, Jr.  
Alton McCullough  
Allan McDonald  
Mary and Mac McDougal  
Helen McFadden  
Martha and Edwin McGee  
Jeanne McGowan  
Jean and John McInnis  
Frances and Laurence McIntosh  
Charles McRae  
Joyce and Ernie Middleton  
Jarrod Miller  
Allison and Kincaid Mills  
Katherine Moore  
Naturally Outdoors Outfitters  
Robbie Norris  
Kalli and Thomas Norton  
William O'Dell  
Charles O'Neal  
Peggy and James O'Neal  
Richard Owens  
Rett and Clyde Padgett  
Cathy and David Pate  
Pee Dee Environmental Services  
Andrea and Corey Phillips  
Robert G. Pitts  
Elizabeth and Britt Poston  
Ira Rainwater III  
Lydia Engelhardt and  
William M. Rambo  
Ellen and Steve Ramsburgh  
Sue and Hugh Reynolds  
Virginia and Dickie Reynolds  
F. Gault Robertson  
Frances and Dennison Robey  
Catherine Rogers  
Mary Courtney and Tom Rogers  
Pat and Blake Rogers Farms  
Rae and Buzz Rogers  
Angela and Tom Roop  
Gailey and Jay Saleeby  
Judy and Ned Schlaefter  
Schoolfield Management  
Company  
Ashley and John Scott

## **Gift Memberships:**

**Liz and Cary Andrews**  
from Diddy and Jim Anderson

**Louise Bavier**  
from Nelson Chandler

**Alex Chandler**  
from Nelson Chandler

**Gracelyn and Peter Elmendorf**  
from Diddy & Jim Anderson

**Fredrick Neely**  
from Marie Neely

**Lana and Steve Ross**  
from Diddy and Jim Anderson

## **Special Thanks to the following volunteers and in-kind donors:**

Diddy & Jim Anderson  
Susan Bankson  
Charlie Bethea  
Janet & Buddy Brand  
Harold Brasington  
Peg & Frank Brown  
Sandi Brown  
Wesley P. Bryant  
Jeremy Collins

Erika Cook  
Blair Cooper  
Marion Cox  
Caroline & Tim Dargan  
Eddy Dowling  
Brittney Edwards  
Cooper English  
Dennis Fraley  
Donna Goodman

Rick Havekost  
Caroline Harper  
Bess & Brice Harry  
Chip Helms  
Ruell Hicks  
Ryan Hicks  
Billy Hinson  
Finley James  
Jay James



# Organizations who have contributed towards between October 16, 2014- October 15, 2015

omitted yours or misspelled your name, please contact Lyles at (843)667-3229 ext. 303.

Betty and David Searcy  
Phyllis and Donald Sheeley  
Jeannie and David Shelley  
Hannah and A.P. Skinner  
Isabel and Steve Smith  
Sally and Francis G. Smith  
Paula and John Snow  
Karla and Calvin Staudt  
Barbara Steadman  
Beth and Steve Stokes  
Hunter Stokes, Sr.  
Dot and Jim Stone  
Gwen Strickland  
Mary and James Stuckey  
Harriette and Skip Swearingen  
Robin Tallon  
Lisa and John Taylor  
Barbara and Joel Thayer  
Lucy Thrower  
U-Lock It Mini Warehouses  
Sylvia and Charlie Vance  
Patti and Robert Vassy  
Allie and Richard Walker  
Nancy and Warren Webert  
Karen and Stephen West  
Martha Chandler and  
Robert Westbrook  
Jessie and George Whitaker  
Ryan Olson and  
Maria Whitehead  
Jeanette and Thomas  
M. Whiteley  
Ginny and Hugh L. Willcox  
Caroline and Keith  
S. Williamson  
Ann and Ben Williamson  
Marguerite and Frank Willis  
Leslie and Mark Wilson  
Roseanne Wilson  
Mona and Isam Zakhour

## Spring (\$25-99)

Jeanie and Tommy Abbott  
Deborah Adams  
David Allen  
Hunter Allen  
Martha and Fitz Allison  
Meredith and David Banner  
Sheila and Russ Barnes  
Robert Barrett  
Merle D. Baxley  
Linda and Samuel Beckham  
Marilynn and Bert Belk  
Belk Funeral Home, Inc.  
L. George Benjamin IV  
D. Paul Bennett

Sandra and Robert Bethea  
Thomas C. Bethea, Jr.  
Stephanie and Jay Bishop  
Doran Bramlett  
Joyce and Kyle Braxton  
Doris Thomas Browder  
Cecelia and Tom Brown  
Sandi Brown  
Barbara Canelon  
Butch Carroll  
Jo Ellen and Tim Carroll  
Buster LeGrand Causey  
Chesterfield Soil and  
Water Conservation District  
Robert Christopher  
Emeline Clarkson  
Ina and B.E. Coggeshall  
Charles H. Coker  
Linda and James Collins  
Blair and Pete Cooper  
Sarah Dargan Cornejo  
Corey and Jamie Craig  
Faison Cushman  
Annemarie Dargan  
Betsy and Ned Dargan  
Suzanne and Benton Dargan  
Sharon Debar  
Martha Anne DeBerry  
Teena and Johnny DeBerry  
Pete Dennis  
Donna and Jerome P. Askins  
Michelle Downey  
DSM  
Agnes and Ralph Edwards  
Paul Elliott  
Harriet Enzor  
Leslie and Jay Ervin  
Mary Jane and David Evans  
Sarah Fallaw  
Mary Lutie and Wade Fletcher  
Diana and Dennis Fraley  
Clifford Gaddy  
Susan Goldstein  
Doris and R.E. Goodson  
Sandra and Gerald Griffin  
Paul S. Grimsley  
Mamie and Kent Gunter  
Susan and Dan Guyton  
Martha and Mike Hartley  
Kat Hastie  
Linda M. Hayes  
Ernestine and Joe Henson  
Ken Hiers  
Gray and Scott Hill  
Carol and William Hill  
Shannon and Bobby Houck  
Marian Y. Howard

Catherine R. and Evans Howle  
Finley and Albert L. James  
Albert Law James IV  
Robert E. James, Jr.  
Jo Jeffers  
Alton Jeffords  
Brown Johnson  
Elizabeth and Phil Jones  
Michelle and Gregg Jones  
Murray Jordan  
Celly and David Kahn  
Kalmia Gardens  
Iris and William Kennedy  
Peggy and Frank Key  
Jennifer King  
Margaret and William L. Kinney  
Margaret and Lee Lanier  
Marge Lewis  
Lydia and Frank A. Lochocki  
James E. Lockemy  
Julia Williams-Love  
Lyles and Brandon Lyles  
Ginger and Cameron Manning  
Beth and Jack Marchette  
Verida Marchette  
Marlboro Soil and Water  
Conservation District  
Clara Maxwell  
Mary and Robert McAlister  
Mary Jane McDonald  
Amy and Malloy McEachin  
Helen T. McFadden  
Suzanne and Duncan McIntyre  
Rod McIver  
Michael Kohl and  
Jane McLamarrah  
Marilynn McLeod  
Frank McLeod III  
Elisabeth and Daniel E. McNiel  
Rebecca and Robert McWatty  
Sarah Mellen  
Christy and Scott Mitchell  
Larry Monahan  
Nancy and Robert Mottern  
Deetz and Derrell Mullins  
Greg Ohanesian  
Jan and Ellis O'Tuel  
Ann and Keith Palmer  
Tracie and Hudnall Paschal  
Mary Ervin Paulson  
Devin and Keith Player  
Bill Poston  
Lee and William Rambo  
Martha Rankin  
Richard Reynolds  
Judy and David Rhodes  
Jessie C. Rogers

Rotary of Darlington  
Gayle and George Sawyer  
Patricia Tomlinson and  
Brandon Schwarz  
Lyllian and Munford Scott  
Jackie Segars  
Sara Simons  
John Sims  
Charlotte and Clay Smith  
Jane and John Spratt  
Sarah and James A. Spruill  
Meredith and Jeff Steinmetz  
Sherry and Dwight Stewart  
Peggy and J. Stokes  
Andrew Stout  
Rosie and Richard Sundeen  
Billy Sylvester  
Molly Symons  
JC Chong and Lou Thompson  
Ben Gregg and Ann Timberlake  
Genia and Duncan Tyson  
Jacquelynn and Tim Uhl  
Alice Vasseur  
Amelia Vernon  
William Walker  
Billy Want  
Jean Waters  
Janet Watt  
Susan and William Weesner  
Evander Whitehead  
J. Carson Whittington  
Cynthia and Clay Williams  
Shelli and Bill Wilson  
Carolyn and Joe Wolfe  
Connie and Frank Woodard  
Amanda and Steve Zeitlin

## Reciprocal Members:

Darlington Soil and Water  
Conservation District  
Greater Hartsville  
Chamber of Commerce  
Palmetto Trust for  
Historic Preservation

## Chandler Award:

Anna and J. W. Nelson Chandler  
Margaret Chandler

## Easement Stewardship:

David Brown  
Robert E. James, Jr.  
Claire M. Palmer

## Event Sponsors:

Diddy and Jim Anderson  
Anderson Brothers Bank  
ArborOne Financial  
Frances and Charlie Bethea  
Janet and Buddy Brand  
Carolina Bank  
Cindy and Eric Belk  
Ann Rodgers Chandler  
Chase Oil Company, Inc.  
Marion and Ricky Coxe  
Crown Beverages, Inc.  
Tim Cunningham  
Dargan Construction Company  
Dargan, King and Knight, LLC  
Dedicated Community Bank  
Duke Energy Carolinas  
Edward Jones- Wendell Jones  
Environmental Banc and  
Exchange, LLC  
Anne and Dan Ervin  
Donna Goodman and  
Dewey N. Ervin  
First Bank  
Kathi and Marshall Flowers  
Lane and Al Gilpin  
Jana and Christopher Goss  
Edwin Haenni  
Anne and Mark Hanna  
Haynsworth Sinkler Boyd, P.A.  
Jane and Rex Huggins  
John Jay James II  
Margaret and Wendell Jones  
Jill and Joe Lewis  
Marlboro Electric  
Cooperative, Inc.  
Micky Finn's  
Lisa and Lex Matthews  
Bernice and Gordon McBride  
McLeod Health  
Anne and Tim Norwood  
Joan and Michael Pavy  
Laura and Thomas Phillips  
Karen and Thomas Phillips  
Raines Hospitality, Inc.  
Brian Sang  
Janet and Dickie Sherman  
Sonoco  
South State Bank  
Patricia Martin and Brad Turley  
Mary Caroline and  
Wallace Vaught  
Webster Rogers  
Emily and Weave Whitehead  
Ida and Alva Whitehead  
Marguerite and Frank Willis

Steve Jones  
Wendell Jones  
William Jones  
Jennifer King  
Diane & Sumter Langston  
Brandon Lyles  
Douglas Lynn  
Lisa & Lex Matthews

Christie & Andrew McLeod  
Bernice & Gordon McBride  
Kathy & Bill McCullough  
Gra' Moore  
Hunter Morgan  
Deetz & Derrell Mullins  
Jeff Murrie  
Naturally Outdoors

Carolyn & Rocky Pearce  
Jennie Peze'  
Catherine Rogers  
L.P. Rogers  
John Scott  
Gray Scott  
Lyllian Scott  
Dan Shelley

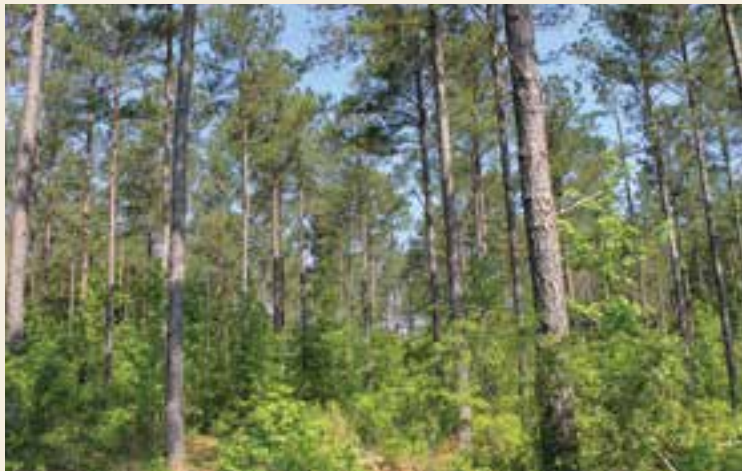
Dickie Sherman  
Paula & John Snow  
Jeff Steinmetz  
Andrew Stout  
Elaine Tanner  
Mindy Taylor  
Mary Caroline Vaught  
Jessica Watts

Johnny Weaver  
Ida & Alva Whitehead  
Emily & Weave Whitehead  
Cordy Williamson  
Keith Williamson  
Brittany Wingo  
Ben Zeigler

tree farm under the American Tree Farm System while also being used as a place for experimental forestry work in collaboration with the Clemson University Department of Forestry and Environmental Conservation. The property includes 227 acres of varying aged loblolly pine, longleaf pine, and bottomland hardwoods. Several stands of loblolly and longleaf have been planted using new techniques for purposes of demonstration and research. The conservation agreement put in place will keep the property in one piece and as a working tree farm.



*Forester Corey Flowers, PDLT board member Andrew McLeod, PDLT staff Seth Cook, and landowner Knowlton Johnson pause for a photo during a tour of JEF.*



*A maturing loblolly pine stand being managed on JEF.*



which owns the school house. Two years later that objective was complete. This was the first project in Florence County funded by the South Carolina Conservation Bank and added to the nearly 5,000 acres of protected lands in the immediate area. A very important public benefit that is often not incorporated into these agreements is public access and this project stands out in that regard. Limited public access was an objective for the property with the anticipation that it be managed to include walking trails for the public to enjoy.



*An old road through property that could serve as a walking path.*



*Conservation Bank Executive Director Marvin Davant, Senator Hugh Leatherman, Alva Whitehead, and PDLT Board Chair Buddy Brand celebrate protection of the Back Swamp Woods*



# ANNUAL REPORT

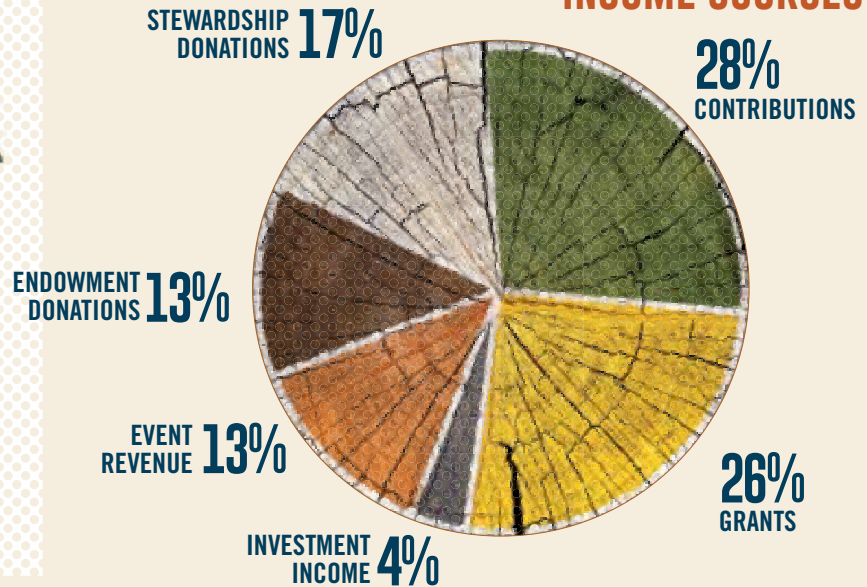
JULY 1, 2014-JUNE 30, 2015

## 257 NEW ACRES PROTECTED

PLUS 3,140 ACRES under conservation easement and two nature preserves protecting 267 additional acres were transferred from Black Creek Land Trust.



### INCOME SOURCES



## OUR PLACES

OPERATING ENDOWMENT GOAL

40% NEEDED



60% PLEDGED OR RECEIVED

12 EVENTS WITH OVER 900 GUESTS

### MEMBERS

Our current membership is now at 495 and climbing. Our members are our main means of support- help us grow! As a non-profit organization, we depend on your generosity. This year we received more than \$80,000 in member contributions from folks just like you.

### CAMPAIGNING FOR SUPPORT

We use the Internet to communicate through our website, email, Twitter, Instagram and Facebook. Forward communications to your friends and invite them to join our conservation community! PDLT has 1,140 'Likes' on Facebook 1,210 Email Contacts with a 38% Open Rate

### LAND PROTECTION GOALS

Each year we strive to exceed our annual goal of protecting a minimum of 1,500 acres by working with landowners to meet their conservation and financial goals.

### GRANTS AND COMMUNITY

This past year we received more than \$150,200 in grants to fund our operations and programs. Grants allow us to buy local produce for food banks, expand landowner outreach, educate and many other key projects!

# A Snapshot of Land Use Across the Pee Dee

What is more common in the Pee Dee – farmland or woodland? Woodland, by a factor of two to one. Which counties are mostly wooded? Chesterfield has the highest percentage and the greatest total acreage of woodland. Which counties are mostly agricultural? Darlington has the highest percentage of agricultural

land, and Florence has the greatest total acreage. What is the most common type of forest? Bottomland hardwoods, by far. Where is development expanding the most? Myrtle Beach and Florence.

The answers to these questions help to guide the

*Here are a few of the findings and how they help PDLT to achieve our goals:*



- Bottomland Hardwood Forests (e.g. "Woody Wetlands") are by far the most common land cover in the Pee Dee, with an estimated 1.4 million acres. Found along large rivers and swamps of the Atlantic Coastal Plain with concentrations in Horry, Georgetown and Williamsburg.



- Cultivated Crops are the second most common land cover with nearly 737,000 acres, concentrated on inner Coastal Plain soils in Marlboro, Dillon, Darlington and Florence counties.



- Evergreen Forest (primarily pine plantations) is the second largest category where trees are predominant with 696,000 acres in and around the federal and state forestland in the Sandhills of Chesterfield and Marlboro counties in addition to the areas of Georgetown and Williamsburg counties historically managed to supply the International Paper mill in Georgetown.

- Developed land totaling nearly 320,000 acres is concentrated in the Myrtle Beach and Grand Strand area of Horry and Georgetown and the Florence area. Moderate and lower intensity development radiates out from these centers along major roads. The county seat towns across the remaining counties are the other pockets of development. Low density development is scattered in rural counties, with land shifting from farming and forestry to residential use.



- Emergent Wetlands, mainly coastal marshes and old rice fields, acres concentrated on Winyah Bay and the lower Waccamaw, Great Pee Dee, Black, and Santee Rivers.

- Pasture and Hay land totaling nearly 120,000 acres can be found in the greatest concentrations in the Sandhills of Chesterfield County and southern Williamsburg County.





conservation work of PDLT and our colleagues -- and now we have a comprehensive Land Use/Land Cover map providing a current snapshot of land use across the nine counties we serve. With the right information about land use, we can gain the knowledge to understand the highest priorities for conservation that will benefit current and future generations.

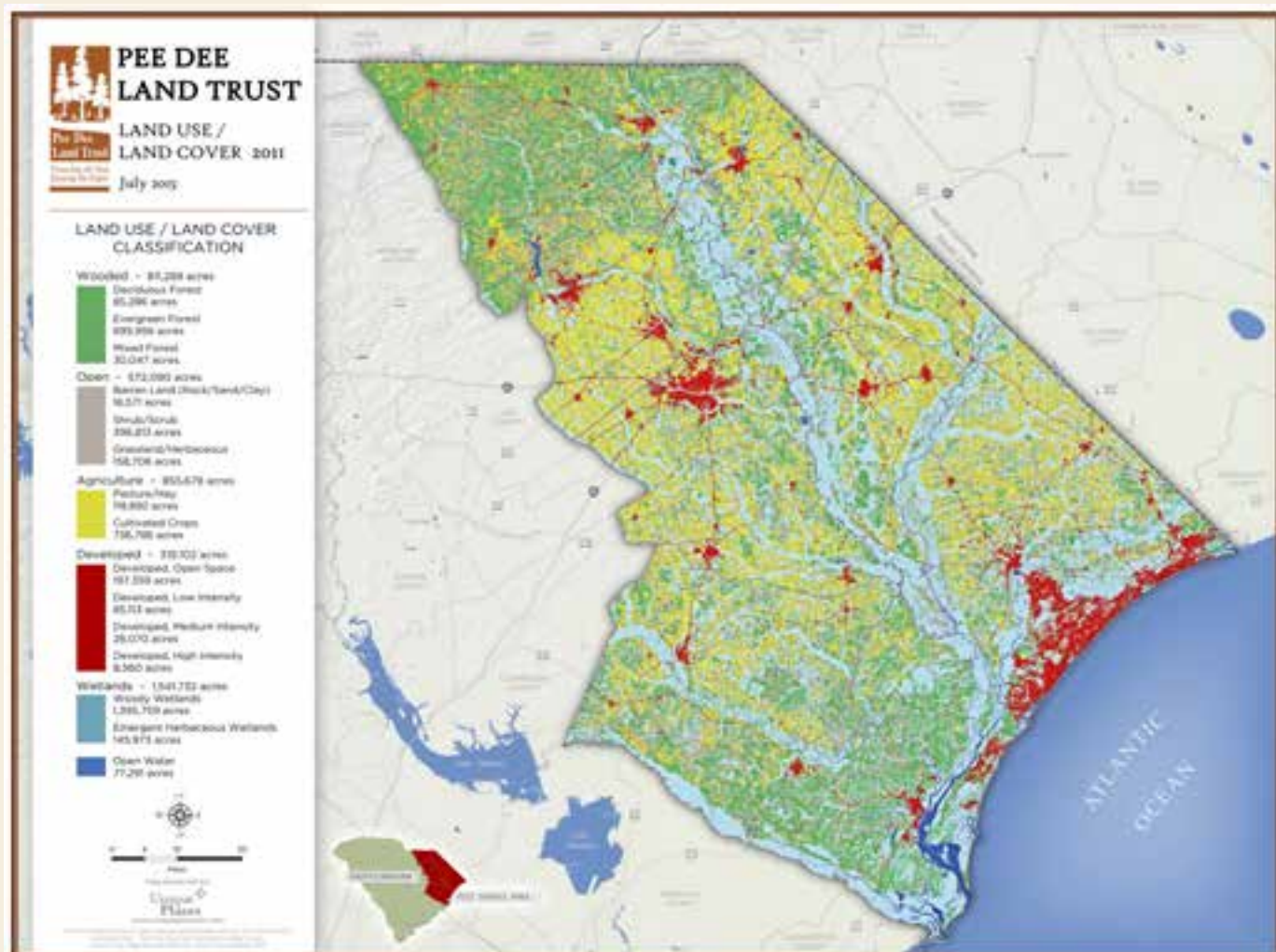
Visit our Website ([www.peedeelandtrust.org](http://www.peedeelandtrust.org)) for the full map below and additional land use maps.



The overall patterns are clear: pine plantations in the Sandhills and Winyah Bay area; big farmland on the inner Coastal Plain soils along the I-95 corridor; expanding development in and around the Grand Strand and Florence; large bottomland hardwoods along our rivers.

How does this influence conservation work for PDLT and our partners? For one, it allows us to be strategic in our conservation decisions. We can set priorities for conservation in the coming years based on "strongholds" such as: cypress-tupelo swamps large enough to support a wide range of wildlife species; large blocks of family farms that can remain viable for generations to come; rich duck habitat and wetland ecosystems of our coastal marshes; or well-managed tracts of longleaf pine that can contribute to the recovery of this rich native forest type throughout the Southeast.

Being strategic in this way will allow PDLT to make its mark as a conservation leader, so that the Pee Dee we know and love will not be a thing of the past--but of the future.



Visit our website to see printable and zoomable maps of our coverage area.

# Outreach

PDLT Executive Director David Harper joined Andrew Waters, Executive Director of the Spartanburg Area Conservancy, in delivering a talk to South Carolina participants at the 30th annual conference of the Carolina Farm Stewardship Association, one of the largest gatherings of local food and farming advocates in the Southeast. David and Andrew were representing the 20+ member organizations that make up the South Carolina Land Trust Network, and highlighted the farmland preservation work of land trusts and the benefits provided to farmers and local food advocates.

They also shared an update on the legislative push in the State House to provide more long-term security for the South Carolina Conservation Bank as the only dedicated source of funding for land conservation projects across the state.



## SC Archaeological Research Trust (ART) board

The ART board held its fall quarterly meeting in Florence and visited the former Pee Dee Navy Yard, the site on the Pee Dee River near Mars Bluff just north of the Hwy 76 bridge where civil war cannons were salvaged in September. The location was a shipbuilding facility during the Civil War where the 170-foot gunboat C.S.S. Pee Dee was built and eventually sunk by Confederate troops to keep it from falling into the hands of General Sherman's troops. Former PDLT board chair Ben Ziegler is the Pee Dee representative on the ART board. PDLT Executive Director David Harper visited the site with the ART board and discussed the role that our land trust plays in identifying and securing important historic sites in the region.



*Photo by Columbia Land Conservancy, Sparrowbush Farms*

## Partnering with Next Generation Farmers

PDLT's Executive Director, David Harper collaborated with the National Young Farmers Coalition to write about land access for beginning farmers in the Summer 2015 issue of Saving Land, the magazine of the national Land Trust Alliance. You can read "Partnering with Next-Generation Farmers" online: [www.lta.org/news/partnering-next-generation-farmers](http://www.lta.org/news/partnering-next-generation-farmers)



## Summer Photo Contest

We asked you to send us a photo of your favorite outdoor summer experience in the Pee Dee and we had some wonderful submissions! After a panel vote, we have determined the winner of the Pee Dee Summer Fun Photo Contest was Bess Harry's "Catching bait at sunrise on the South Santee River in Georgetown, SC."

1st Runner-Up: Friends swimming and having fun at Black Creek, by Emily Whitehead

2nd Runner-up: Miss Tilly Green enjoying a Garden City sunset. There's no better combo than man's best friend and a SC beach at sunrise, by Leslie Barth

To see all the summer fun photo submissions, please see the album on our Facebook page. Thank you to everyone that submitted photos, it truly was a close vote on so many gorgeous shots of outdoor living in the Pee Dee. The fall/winter outdoor experiences photo contest will be announced soon!



# Black Creek BioBlitz

Pee Dee Land Trust has launched a Black Creek BioBlitz project, with a generous \$25,000 grant from the Wells Fargo Environmental Solutions for Communities grant program, funded by the Wells Fargo Foundation and administered by the National Fish and Wildlife Foundation (NFWF). Phase II of the project will be funded by a grants from the Duke Energy Foundation. The BioBlitz will engage more than 1,000 children, teens, and adults in the Pee Dee as "citizen scientists" assisting PDLT in an inventory of native plants and wildlife at our Louise and Woods M. Dargan Preserve on Black Creek in Darlington. This 217-acre nature preserve, formerly under the stewardship of the Black Creek Land Trust, has been permanently preserved as a wonderful example of a mature oak-pine forest with extensive stream frontage at the confluence of Black Creek and Swift Creek.

A BioBlitz can best be described as a comprehensive survey of a designated area to find as many living species as possible for a designated period of time. BioBlitz programs are conducted in national parks and nature preserves across the U.S. and around the



world. They offer youth and adults alike a wonderful way to be immersed in nature while contributing to our understanding of the biodiversity – the richness of plant and animal species – right here in our communities. While a BioBlitz is typically carried out as an intense, 24-hour marathon, our BioBlitz will occur with many different groups making short 1 – 2 hour visits over the next year.

The citizen scientists for this project will include 4-H clubs, Boy Scouts, Girl Scouts, home schoolers, public and private schools, and Boys and Girls Clubs, all of whom will have the chance to help us discover and document the wonders of the natural world. Beyond their initial visit, they and their families will have the chance to track the results they achieve on a special web page devoted to the Black Creek BioBlitz. Their focus will be: trees, shrubs, vines, plants, grasses, ferns, mushrooms, mosses, lichens, mammals, birds, reptiles, amphibians, fish and certain insects.

*Palmedes Swallowtail butterfly, which relies on the native Red Bay trees at the preserve as a food source.*



While environmental education is central to PDLT's mission, we do not operate as an educational institution. For this reason, it is essential that we have assembled a talented BioBlitz Advisory Team for this project. Sarah Rawlins, a graduate of Francis Marion University (FMU) biology program, serves as our Project Coordinator. Dr. Jeff Steinmetz, Sarah's former professor at FMU, shares his expertise and brings his biology students to conduct surveys at the Dargan Preserve. Amanda Morrell, a landscape architect with Stantech, and based in Latta, contributes her design skills in shaping the overall look of the educational materials and interpretive signage (including the logo featured above). Terasa Lott, Water Resources Agent with Clemson Extension, offers her skills as a Master Naturalist.

What will be the ultimate outcome of this 1-year project? At least 1,000 students in our communities will have learned about the biodiversity of the Dargan Preserve, and contributed to our understanding of how best to manage this natural treasure for the benefit of people, plants, and animals. The Black Creek BioBlitz is designed to inspire the next generation of conservationists in the Pee Dee.



*Wells Fargo volunteers came out to help clean-up the entrance to Dargan Preserve.*

## Inside this Issue

Easement Project Updates.....	pg. 1
Board & Staff News.....	pg. 2
Our Places .....	pg. 3
Events Updates.....	pg. 4-5
Honoraria & Memorials .....	pg. 6
Grant Updates .....	pg. 7
Contributors .....	pg. 8-9
Easement Projects Continued .....	pg. 10
Annual Report.....	pg. 11
Land Use .....	pg. 12-13
Outreach.....	pg. 14
Black Creek BioBlitz .....	pg. 15

## Is Your Membership Current?

### Would you like to give the Gift of Membership to a friend or family Member?

I would like to support Pee Dee Land Trust's work through a monetary contribution.

#### Donor Information:

Name \_\_\_\_\_

#### Level

Address \_\_\_\_\_

City \_\_\_\_\_

State \_\_\_\_\_ Zip \_\_\_\_\_

Phone \_\_\_\_\_ Email \_\_\_\_\_

- ☐ Watershed: \$5,000+
- ☐ River: \$1,000-\$4,999
- ☐ Creek: \$500-\$999
- ☐ Stream: \$250-\$499
- ☐ Tributary: \$100-\$249
- ☐ Spring: \$25-\$99
- ☐ Corporate: \$250+



*If this is a gift, please provide the recipients contact information in order for us to inform them of their gift membership.*

\_\_\_\_\_  
\_\_\_\_\_

Please make checks payable to:

**Pee Dee Land Trust, P.O. Box 2134, Florence, SC 29503**

You may also donate at [www.peedeelandtrust.org](http://www.peedeelandtrust.org).



P.O. Box 2134  
Florence, SC 29503

(843) 667-3229  
[info@peedeelandtrust.org](mailto:info@peedeelandtrust.org)  
[www.peedeelandtrust.org](http://www.peedeelandtrust.org)



Printed on  
Recycled Paper

#### OUR MISSION:

To conserve, and to promote an appreciation of,  
the natural, agricultural and historical resources  
of the Pee Dee Region of South Carolina

Non Profit Org  
US POSTAGE  
PAID  
Florence, SC  
Permit #113